



Nº Molino: 210

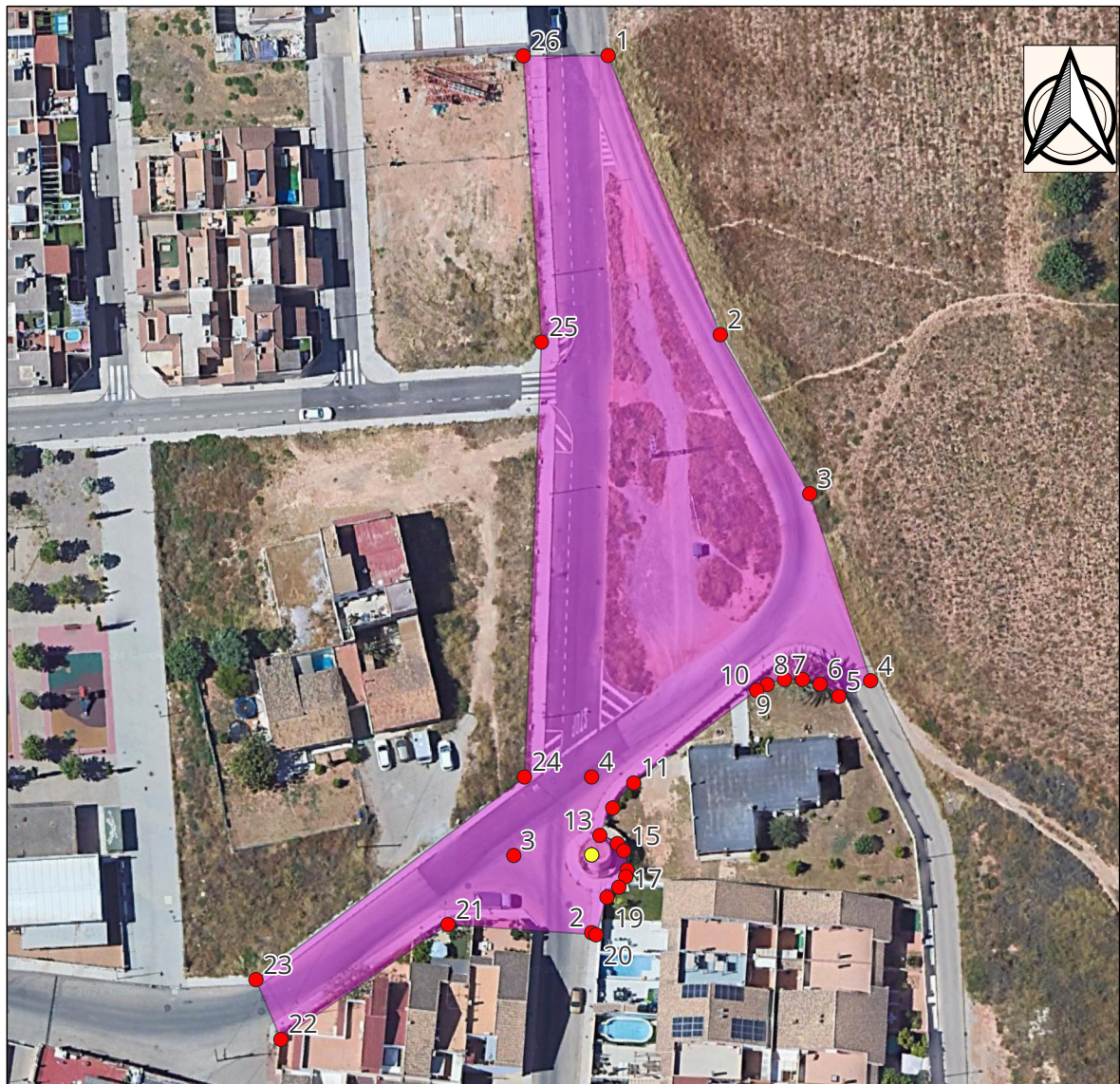
Nombre popular: Molino Finca San José o Molino del Pollo

Municipio: Cartagena

Coordenadas:

X	Y
676502,900	4167542,460

Coordenadas UTM zona 30N ETRS89





## Vértices del entorno del molino nº 210 Nombre popular: Molino Finca San José o Molino del Pollo

Coordenadas UTM zona 30N ETRS89

Nº VÉRTICE	X	Y
1	676505,310	4167659,471
2	676521,738	4167618,596
3	676534,842	4167595,323
4	676543,740	4167567,943
5	676539,119	4167565,665
6	676536,349	4167567,445
7	676533,789	4167568,135
8	676531,149	4167568,125
9	676528,609	4167567,395
10	676527,059	4167566,545
11	676509,059	4167552,985
12	676505,989	4167549,325
13	676504,109	4167545,305
14	676506,679	4167544,105
15	676507,609	4167543,045
16	676508,099	4167540,265
17	676507,899	4167539,255
18	676506,889	4167537,725
19	676505,149	4167536,255
20	676503,538	4167530,759

Nº VÉRTICE	X1	Y1
21	676481,879	4167532,275
22	676457,419	4167515,445
23	676453,749	4167524,185
24	676493,069	4167553,855
25	676495,549	4167617,515
26	676492,890	4167659,425